

AQUARIA™ 25 GPM Slant Plate Clarifier

Clarifiers designed to deliver “rock solid” wastewater treatment performance based on proven “space saving” liquid/solid separation technology

The AQUARIA™ Series Technology:

- The slant plates offer an increased counter-current surface area, consistent laminar flow and a compact design.
- The **AQUARIA™** integrated flocculation tank further enhances the compact design and improves performance by reducing blow-thru.

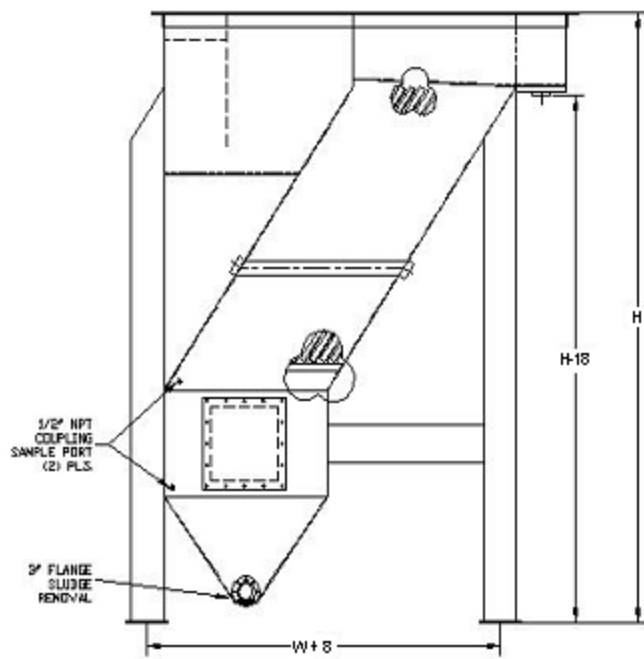
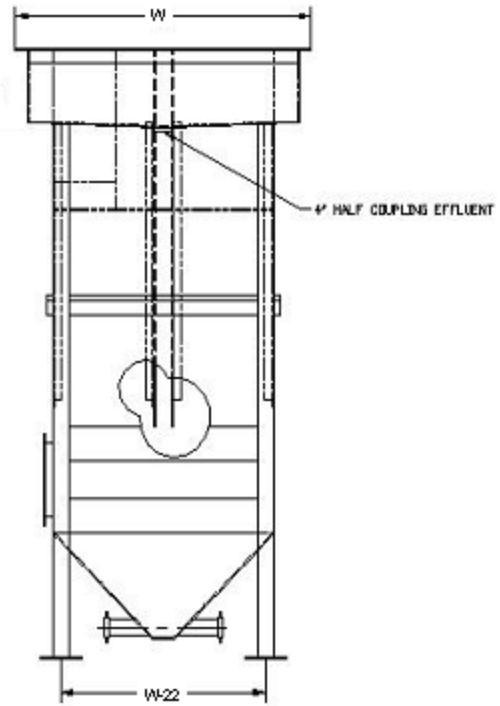
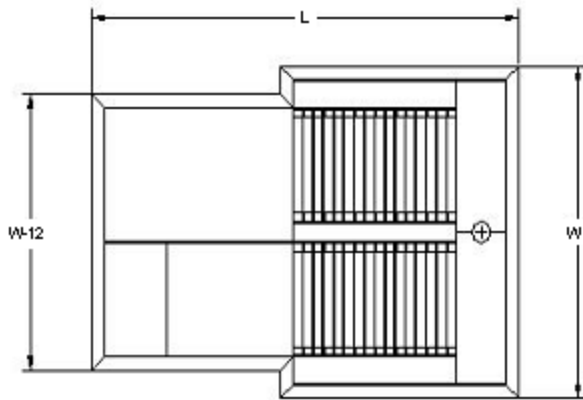
Technical Specifications *

Model	AQ-25-SP
Volume (ft ³)	110
Settling Plates	TBD
Length (in.)	84.0
Width (in.)	60.0
Height (in.)	104.0

The AQUARIA™ Series Construction:

- The frame is constructed with a beefy ¼” rectangular steel tube stock and the body is fabricated with substantial ¼” thick plate steel welded inside-and-out for maximum durability.
- The removable settling plates are constructed from light-weight ¼” PVC for easy cleaning.
- The **AQUARIA™** exterior is phosphate treated and painted with a high quality, self priming, 2-part, high build epoxy coating that is applied 7-10 mils thick.
- The interior is sand blasted and treated with an amine-cured coal tar epoxy that is applied 12-16 mils thick to resist corrosion and extend service life.
- The sludge thickener is constructed of ¼” plate steel matched up with (2) ½” NPT sample ports, a flanged access hatch and a 3” steel dual flanged sludge removal drain.

“The Clear Choice for Industrial Wastewater Treatment”



* Measurements Subject to Change